

**KING
KLINKER**

Winter Field
King 9/16" Size



TOSCOM

HIGH QUALITY THIN BRICK MANUFACTURED FOR INTERIOR / EXTERIOR USE.



Winter Field | King 9/16" Size

THIN BRICK BREAKDOWN

Thin Brick | Winter Field
Size | King 9/16" Size
Square Feet | 29,828 SF
Number of Thin Brick | 140,190 pcs., 9,609 corners pcs.

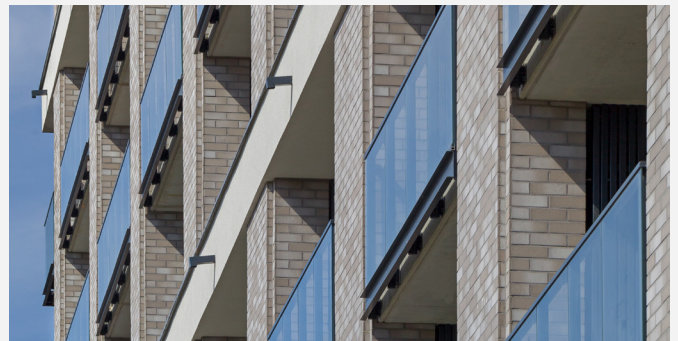
TOSCOM | WROCLAW, POLAND

Toscom is an apartment building in Wrocław within the Old Town district at 9-11 Traugutta Street and 13a Kra-skiego Street. This seven-story building will be 40,903 SF, of which the largest part will be occupied by retail space of 3832 SF.

KEY PLAYERS

Architect | Design Studio, Dziewonski Lukaszewicz Architects
Developer | Toscom Development
Grout Method | European Dry Grout

The building's designers are architects from the Dziewon-ski Łukasiewicz Architects studio in Wrocław, while its developer is Toscom Development.



KING KLINKER THIN BRICK PASSES PCI PULL OUT TEST FOR ALL CLAY COLORS.

KINGKLINKER-AMERICA.COM | 608-406-9723 | SALES@KINGKLINKER-AMERICA.COM